

Leather stamp making machine

IMP-C1

IMP-C1 is able to engrave metals without the use of brass cutting oil and other materials. Anyone can now easily engrave metal molds (leather stamps, gold/silver molds, die cutting, etc.).



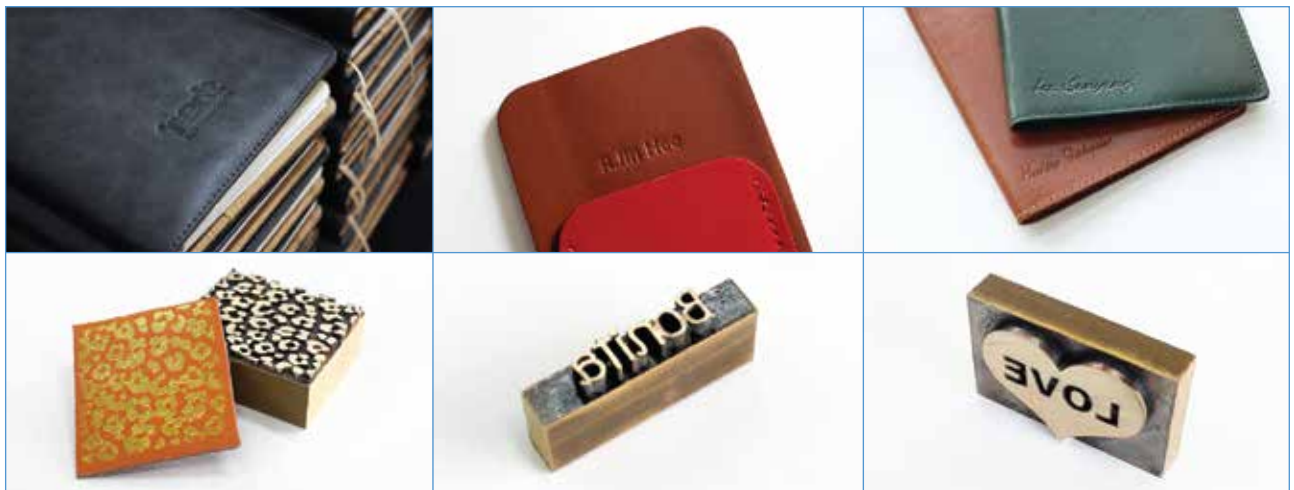
Specification

Size	270mm(W) x 360mm(H) x 352mm(D)
Working Area	X:45mm Y:75mm Z:28mm (non-metal Z:22mm)
Resolution	(XY) 0.005mm / (Z)0.00125mm
Rotary	rough cutting : 4mm, finishing : 3mm
Weight	23.7Kg
Power Consumption	30W
Power	AC 100~240V 50/60Hz
Spindle Motor Power	27W, DC
Spindle Revolution	14,500RPM(rough cutting) / 14,500RPM(finishing)
Display	2.4 Inch Graphic LCD
Communication	USB

Use

leather craft workshops, leather product on/offline shops, watch shops, pet shops, print shops, mold on/offline shops, industrial factories using press mold

- Faster production by automatically changing between roughing and finishing cutting tools with the use of two 14,5000 RPM spindle motors.
- Tool lifespan is fairly extended with the use of different roughing and finishing cutting tools.
- Easy to fix the materials in place with optimized clamp.
- 75x45 working area gives the ability to engrave most leather stamps.
- Easy tool change with a Setscrew spindle.
- Automatically checks the tool's height.
- Automatically processes all fragmented actions once the user locks the material in place.
- Accurate and low-noise Z-axis with built-in ball screw.
- Guide shield structure minimizes the chips getting stuck on the feed shaft.
- Shortened engraving time with various standardized brass molds.
- Capable of making leather cutting dies.
- Offers special software for leather stamp making.
- Fast and easy-to-learn software.
- Able to design not only alphabets and Arabic numbers but also patterns and logos.
- Reasonable maintenance with expendables being only the tools and spindle belt.



Faster production by automatically changing between roughing and finishing cutting tools with the use of two 14,500 RPM spindle motors.

- Equipped with two 14,500 RPM spindle motors
- Equipped with two cutters and automatically changes tools
- Tool lifespan is extended with automatic tool changing system



Able to design not only alphabets and Arabic numbers but also patterns and logos.

- Able to engrave most shapes.
- Capable of mixing different languages, which is not possible with other conventional machines.
- Engraves not only brand names and phone numbers but also customized images such as patterns and letters.



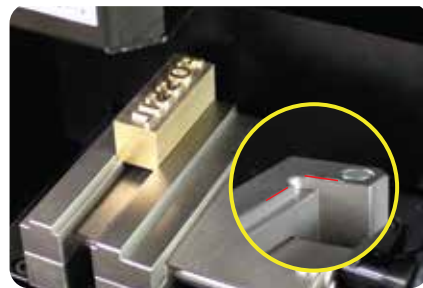
Tool lifespan extended by with the use of different roughing and finishing cutters.

- Using two built-in spindles, the tools lifespan is further extended.



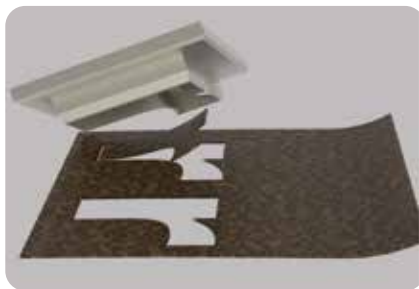
Optimized clamp for fixing and engraving brass

- Easily fix a material in place with specialized clamp
- Easily raise, push, or tighten the material on the base.



Capable of making leather cutting dies

- Able to make die cutting shape with any width and depth.
- Able to directly make cutting dies for small quantity manufacturing.



Shortened the engraving time with various standardized brass molds

- Offers various standardized materials.
- Reduces cost by selecting the suitable size of materials there by making production of single-use molds possible.
- Lessens the production time and extends the tools lifespan.



75x45mm working area

- Sufficient working area for most embossing die molds.

Easy tool change with Setscrew Spindle

- Equipped setscrew-type spindle that can easily be loosened using a wrench to change the tool