

Mini-sized industrial engraver "Impression" for marking name plates/ materials.

IMPRESSION-20

IMP-20

IMP-20 is a perfect solution for engraving industrial materials. It is easy to use with acoustic noise level, neat design, compact size and provides easy manual that anyone can access to engraving. This mini-sized engraving machine can perform scribing-marking on industrial metal plates and other various types of metal materials.



Specification

Size	288mm(W) x 303mm(H) x 355mm(D)
Max. engraving area	130mm(X) x 116mm(Y) x 30mm(Z)
Resolution	(XY) 0.005mm / (Z)0.00125mm
Tool Diameter	4mm
Weight	24.6Kg
Power Consumption	12W
Power Supply	AC 100~240V 50/60Hz

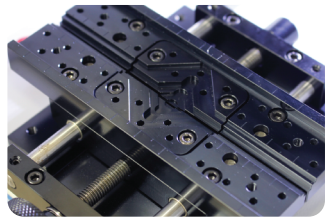
Use Engraving plates with high-speed scratching system that suits best for markings.

- Best solution for engraving name plates.
- Engraves various types of metal materials.
- Detachable clamp available for custom order.
- Clear and resistant marking.
- Mini-sized and can be placed in any compact places.
- With acoustic noise level, it promotes quiet working environment.
- Fully automatic height and level adjustor.
- Easy to check markings with embedded pointer light.
- Easy and convenient engraving with provided exclusive program (Magic Art).
- Highly durable diamond-tipped tools provided that keep the maintenance fee minimal.
- Easy manuals let multiple users share the engraver with ease.

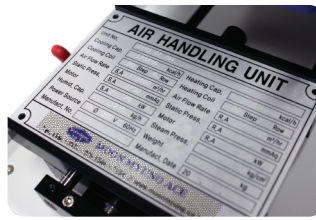


Multiple-purpose clamp/ pin hole

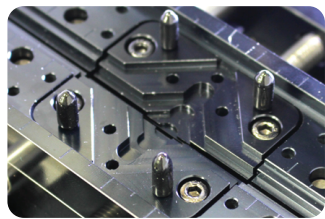
- Most materials can be installed quick and easy with multiple-purpose clamp.
- Various and irregularly shaped materials can be easily placed with the pin.
- Quick and easy to replace target materials.



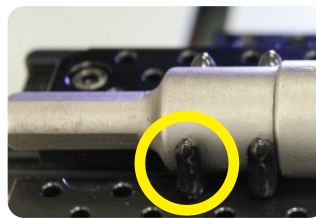
Multi-purpose clamp.



Name plate is fixed onto the clamp.



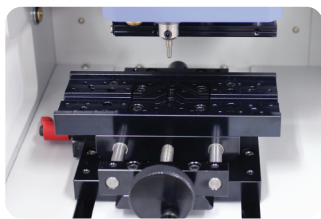
A pin to fix the material.



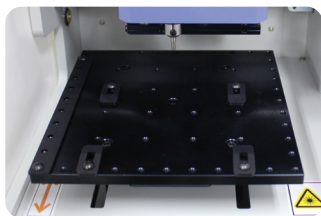
Example of using the pin to fix the material.

Detachable clamp

- Detachable clamp, also comes with various types of clamp for many purposes and establishes perfect engraving environment.



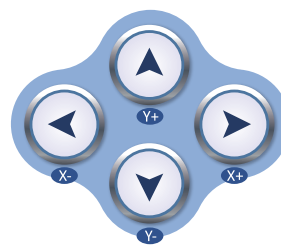
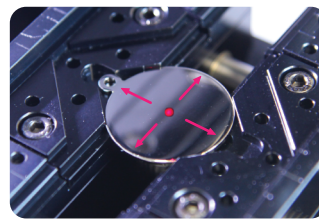
Multi-purpose clamp table



Flat clamp (optional)

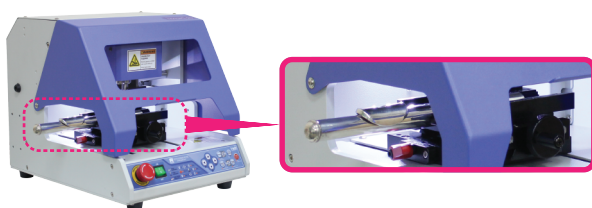
Laser-pointer to reassure target engraving position

- Embedded laser-pointer makes it easier to locate and adjust the engraving spot and prevents errors.



Opened left side

- Left side of the engraver is opened for easy marking on long materials like pipes.



Scribing marking

- Highly-durable diamond tipped tools make it possible to perform scribing-marking on various types of materials.

