



"PRO-MEC" Three Phase Squirrel Cage Induction Motors

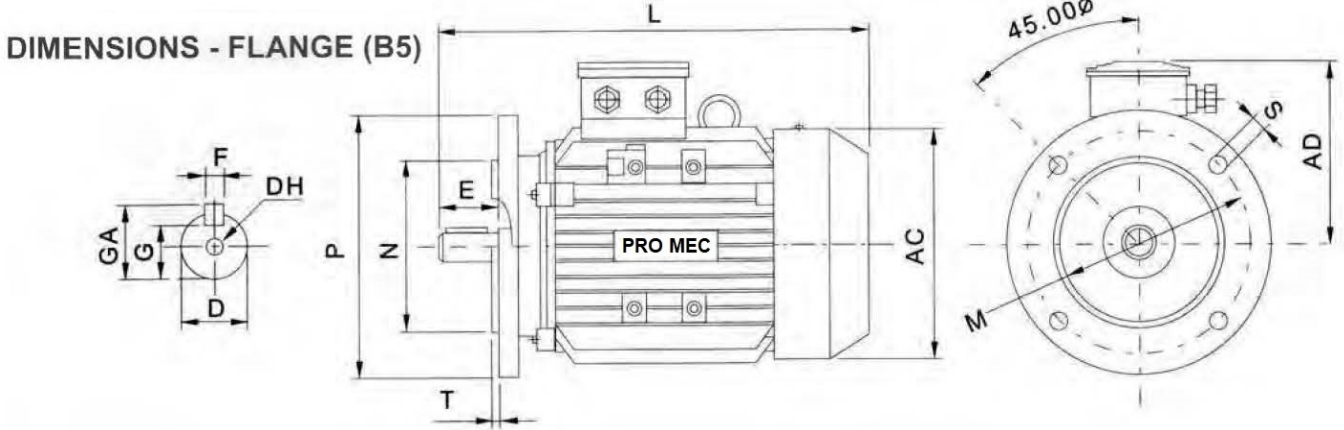
Technical Data

2 Poles		3000 rpm						
Type	FULL LOAD							
	(kW)	(HP)	(r/min)	380 V IN (A)	h(%)	(cosφ)	Torque NM	Weight Kg
63MA-2	0.18	0.25	2720	0.53	65	0.80	0.63	3.5
63MB-2	0.25	0.33	2720	0.69	68	0.81	0.87	3.9
71MA-2	0.37	0.5	2740	0.99	70	0.81	1.25	5.4
71MB-2	0.55	0.75	2740	1.4	73	0.82	1.86	6.2
80MA-2	0.75	1	2930	1.83	75	0.83	2.6	8.6
80MB-2	1.10	1.5	2930	2.58	77	0.84	3.7	15
90SA-2	1.50	2	2840	3.43	79	0.84	5	20
90LA-2	2.20	3	2840	4.85	81	0.85	7.4	24
100LA-2	3	4	2870	6.31	83	0.87	10	30
112MA-2	4	5.5	2890	8.1	85	0.88	13.3	38
132SA-2	5.50	7.5	2900	11	86	0.88	18.1	57
132SB-2	7.50	10	2900	14.9	87	0.88	24.5	61
160MA-2	11	15	2930	21.3	88	0.89	36.2	73
160MB-2	15	20	2930	28.8	89	0.89	48.8	111
160LA-2	18.5	25	2930	34.7	90	0.90	60.4	126
180MA-2	22	30	2940	41	90	0.90	71.4	176
200LA-2	30	40	2950	55.5	91.2	0.90	97.2	226
200LB-2	37	50	2950	67.9	92	0.90	119.8	245
225M-2	45	60	2970	82.3	92.3	0.90	144.8	280
250MA-2	55	75	2970	101	92.5	0.90	177	379
280S-2	75	100	2970	134	93	0.90	241.3	466
280MA-2	90	125	2970	160	93.8	0.91	289.5	578
315SA-2	110	150	2980	195	94	0.91	353.9	845
315MA-2	132	175	2980	233	94.5	0.91	423.2	942
315LA-2	160	210	2980	279	94.6	0.92	513	1019
315LB-2	200	260	2980	348	94.8	0.92	641.2	1177
355M-2	250	330	2980	433	95.3	0.92	801.5	1740
355L-2	315	420	2980	544	95.6	0.92	1010	1920

4 Poles		1500 rpm						
Type	FULL LOAD							
	(kW)	(HP)	(r/min)	380 V IN (A)	h(%)	(cosφ)	Torque NM	Weight Kg
56MB-4	0.09	0.12	1350	0.42	51	0.60	0.64	3.1
63MA-4	0.12	0.16	1310	0.44	57	0.72	0.85	3.5
63MB-4	0.18	0.25	1310	0.62	60	0.73	1.3	3.9
71MA-4	0.25	0.33	1330	0.79	65	0.75	1.73	5.1
71MB-4	0.37	0.5	1330	1.12	67	0.74	2.6	5.9
80MA-4	0.55	0.75	1390	1.57	71	0.75	3.8	13
80MB-4	0.75	1	1390	2.03	73	0.76	5.2	14
90SA-4	1.1	1.5	1400	2.89	75	0.77	7.5	20
90LA-4	1.5	2	1400	3.7	78	0.79	10.2	23
100LA-4	2.2	3	1430	5.16	80	0.81	14.8	29
100LB-4	3	4	1430	6.78	82	0.82	20.2	33
112MA-4	4	5.5	1440	8.8	84	0.82	26.5	40
132SA-4	5.5	7.5	1440	11.7	85	0.83	36.5	59
132MA-4	7.5	10	1440	15.6	87	0.84	49.8	69
160MA-4	11	15	1460	22.3	88	0.84	73	109
160LA-4	15	20	1460	30.1	89	0.85	98.2	130
180MA-4	18.5	25	1470	36.5	90.5	0.86	120.2	165
180LA-4	22	30	1470	43.2	91	0.86	143	180
200L-4	30	40	1470	57.6	92	0.86	195	240
225S-4	37	50	1480	69.9	92.5	0.87	238.9	278
225M-4	45	60	1480	84.7	92.8	0.87	290.5	308
250MA-4	55	75	1480	103	93	0.87	355.1	402
280S-4	75	100	1480	140	93.8	0.87	483.9	540
280MA-4	90	125	1490	167	94.2	0.87	580.7	615
315S-4	110	150	1490	201	94.5	0.88	709.8	870
315M-4	132	175	1490	240	94.8	0.88	851.8	990
315LA-4	160	210	1490	287	94.9	0.89	1032	1053
315LB-4	200	260	1490	359	95	0.89	1290	1243
355M-4	250	330	1485	443	95.3	0.9	1603	1745
355L-4	315	420	1485	556	95.6	0.9	2020	1957

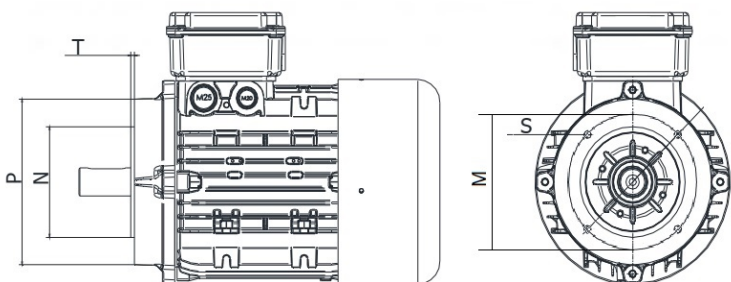
6 Poles		1000 rpm						
Type	FULL LOAD							
	(kW)	(HP)	(r/min)	380 V IN (A)	h(%)	(cosφ)	Torque NM	Weight Kg
71MA-6	0.18	0.25	850	0.74	56	0.66	1.91	5.5
71MB-6	0.25	0.33	850	0.95	59	0.68	2.7	6.7
80MA-6	0.37	0.5	890	1.3	62	0.7	4	14
80MB-6	0.55	0.75	890	1.79	65	0.72	5.9	16
90SA-6	0.75	1	910	2.29	69	0.72	7.9	20
90LA-6	1.1	1.5	910	3.18	72	0.73	11.5	23
100LA-6	1.5	2	940	3.94	76	0.75	15.6	29
112MA-6	2.2	3	940	5.6	79	0.76	22.4	38
132SA-6	3	4	960	7.4	81	0.76	29.9	54
132MA-6	4	5.5	960	9.8	82	0.76	39.8	62
132MB-6	5.5	7.5	960	12.9	84	0.77	54.7	69
160MA-6	7.5	10	970	17	86	0.78	73.9	103
160LA-6	11	15	970	24.2	87.5	0.81	108.3	121
180LA-6	15	20	970	31.6	89	0.81	147.7	173
200LA-6	18.5	25	970	38.6	90	0.83	182.2	221
200LB-6	22	30	970	44.7	90	0.84	216.7	236
225M-6	30	40	980	59.3	91.5	0.86	292.5	301
250MA-6	37	50	980	71	92	0.86	360.7	370
280S-6	45	60	980	86	92.5	0.86	438.7	478
280MA-6	55	75	980	105	92.8	0.86	536.2	535
315SA-6	75	100	990	141	93.5	0.86	723.8	790
315MA-6	90	125	900	169	93.8	0.86	868.6	880
315LA-6	110	150	990	206	94	0.86	1062	997
315LB-6	132	175	990	244	94.2	0.87	1274	1103
355MA-6	160	210	990	292	94.5	0.88	1544	1400
355MB-6	200	260	990	365	94.7	0.88	1930	1780
355L-6	250	330	990	455	94.9	0.88	2413	2050

8 Poles		750 rpm						
Type	FULL LOAD							
	(kW)	(HP)	(r/min)	380 V IN (A)	h(%)	(cosφ)	Torque NM	Weight Kg
80MA-8	0.18	0.25	630	0.88	51	0.61	2.8	14
80MB-8	0.25	0.33	640	1.15	54	0.61	3.7	16
90SA-8	0.37	0.5	660	1.49	62	0.61	5.4	20
90LA-8	0.55	0.75	660	2.18	63	0.61	8	23
100LA-8	0.75	1	690	2.39	71	0.67	10.4	31
100LB-8	1.1	1.5	690	3.32	73	0.69	15.2	35
112MA-8	1.5	2	680	4.5	75	0.69	20.8	38
132SA-8	2.2	3	710	6	78	0.71	29.6	52
132MA-8	3	4	710	7.9	79	0.73	40.4	61
160MA-8	4	5.5	720	10.3	81	0.73	53.1	90
160MB-8	5.5	7.5	720	13.6	83	0.74	73	102
160LA-8	7.5	10	720	17.8	85.5	0.75	99.5	122
180LA-8	11	15	730	25.1	87.5	0.76	144	150
200L-8	15	20	730	34.1	88	0.76	196.3	212
225S-8	18.5	25	730	40.6	90	0.76	242.1	285
225M-8	22	30	740	47.4	90.5	0.78	284	385
250MA-8	30	40	740	64	91	0.79	387.3	378
280S-8	37	50	740	78	91.5	0.79	477.7	485
280MA-8	45	60	740	94	92	0.79	581	568
315S-8	55	75	740	111	92.8	0.81	710.1	745
315M-8	75	100	740	151	93	0.81	968.3	805
315LA-8	90	125	740	178	93.8	0.82	1162	998
315LB-8	110	150	740	217	94	0.82	1420	1175
355MA-8	132	175	740	261	93.7	0.82	1704	1580
355MB-8	160	210	740	315	94.2	0.82	2066	1680
355L-8	200	260	740	388	94.5	0.83	2582	1995



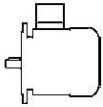


Frame size	Pole	Mounting Dimensions											Flange Holes	Overall Dimensions		
		D	DH	E	F	G	GA	M	N	P	S	T		AC	AD	L
56	All	9	M4X12	20	3	7.2	10.2	100	80	120	7	3	4	110	100	199
63	All	11	M4X12	23	4	8.5	12.5	115	95	140	10	3	4	130	111	217
71	All	14	M5X12	30	5	11	16	130	110	160	10	3.5	4	145	118	245
80	All	19	M6X12	40	6	15.5	21.5	165	130	200	12	3.5	4	175	134	287
90S	All	24	M8X19	50	8	20	27	165	130	200	12	3.5	4	195	140	315
90L	All	24	M8X19	50	8	20	27	165	130	200	12	3.5	4	195	140	340
100L	All	28	M10X22	60	8	24	31	215	180	250	15	4	4	215	160	385
112M	All	28	M10X22	60	8	24	31	215	180	250	15	4	4	240	178	400
132S	All	38	M12X28	80	10	33	41	215	230	300	15	4	4	275	206	483
132M	All	38	M12X28	80	10	33	41	265	230	300	15	4	4	275	206	510
160M	All	42	M16X36	110	12	37	45	265	250	350	19	5	4	330	255	615
160L	All	42	M16X36	110	12	37	45	300	250	350	19	5	4	330	255	670
180M	All	48	M16X36	110	14	42.5	51.5	300	250	350	19	5	4	380	280	700
180L	All	48	M16X36	110	14	42.5	51.5	300	250	350	19	5	4	380	280	740
200L	All	55	M20X42	110	16	49	59	300	300	400	19	5	4	420	305	770
225S	All	60	M20X42	140	18	53	64	350	350	450	19	5	8	470	335	815
225M	2	55	M20X42	110	16	49	59	400	350	450	19	5	8	470	335	820
225M	4, 6, 8	60	M20X42	140	18	53	64	400	350	450	19	5	8	470	335	845
250M	2	60	M20X42	140	18	53	64	400	450	550	19	5	8	510	370	910
250M	4, 6, 8	65	M20X42	140	18	58	69	400	450	550	19	5	8	510	370	910
280S	2	65	M20X42	140	18	58	69	500	450	550	19	5	8	580	410	985
280S	4, 6, 8	75	M20X42	140	20	67.5	79.5	500	450	550	19	5	8	580	410	985
280M	2	65	M20X42	140	18	58	69	500	450	550	19	5	8	580	410	1035
280M	4, 6, 8	75	M20X42	140	20	67.5	79.5	500	450	550	19	5	8	580	410	1035
315S	2	65	M20X42	140	18	58	69	600	550	660	24	6	8	645	530	1160
315S	4, 6, 8	80	M20X42	170	22	71	85	600	550	660	24	6	8	645	530	1270
315M	2	65	M20X42	140	18	58	69	600	550	660	24	6	8	645	530	1190
315M	4, 6, 8	80	M20X42	170	22	71	85	600	550	660	24	6	8	645	530	1300
315L	2	65	M20X42	140	18	58	69	600	550	660	24	6	8	645	530	1190
315L	4, 6, 8	80	M20X42	170	22	71	85	600	550	660	24	6	8	645	530	1300
355M/L	2	75	M20X42	140	20	67.5	79.5	740	680	800	24	6	8	710	655	1500
355M/L	4, 6, 8	95	M20X42	170	25	86	102	740	680	800	24	6	8	710	655	1530

DIMENSIONS - FLANGE (B14)

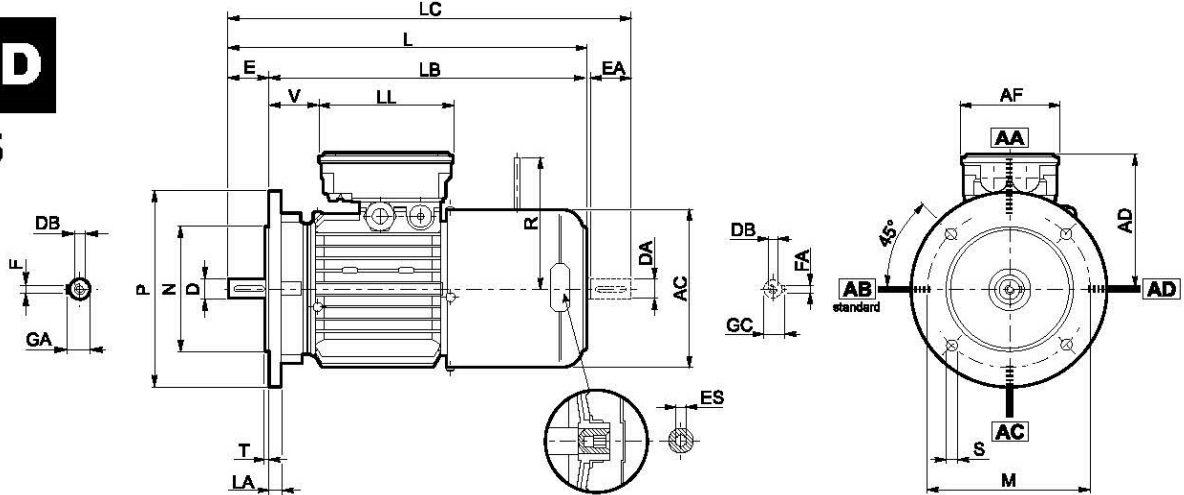


Mounting B14					
SIZE	P	N	M	S	T
56	80	50j6	65	M4	2,5
63	90	60j6	75	M5	2,5
71	105	70j6	85	M6	2,5
80	120	80j6	100	M6	3
90	140	95j6	115	M8	3
100/112	160	110j6	130	M8	3,5
132	200	130j6	165	M10	3,5
160	250	180h6	215	M12	4



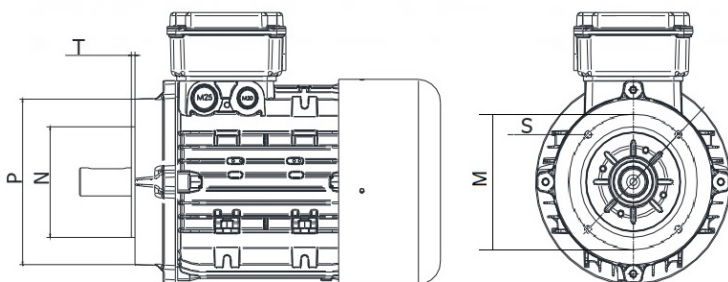
4P 1500 min⁻¹ - S1 50 Hz						freno c.c. / d.c. brake G.S.-bremse / frein c.c.					freno c.a. / a.c. brake W.S.-bremse / frein c.a.			
						FD					FA			
Pn kW		n min ⁻¹	Mn Nm	In [400V] A	Mod	Mb Brake Torque Nm	Z _o 1/h Max. permissible no-load starting frequency (I = 50%) NB SB		IM B5  Kg	Mod.	Mb Brake Torque Nm	Z _o 1/h Max. permissible no-load starting frequency (I = 50%)	IM B5  Kg	
0.06	BN 56A	4	1340	0.43	0.28									
0.09	BN 56B	4	1350	0.64	0.42									
0.12	BN 63A	4	1350	0.85	0.47	FD 02	1.75	10000	13000	5.2	FA 02	1.75	13000	5.0
0.18	BN 63B	4	1320	1.30	0.71	FD 02	3.5	10000	13000	5.6	FA 02	3.5	13000	5.4
0.25	BN 63C	4	1340	1.78	0.80	FD 02	3.5	7800	10000	6.8	FA 02	3.5	10000	6.6
0.25	BN 71A	4	1380	1.73	0.78	FD 03	3.5	7700	11000	7.8	FA 03	3.5	11000	7.5
0.37	BN 71B	4	1370	2.6	1.05	FD 03	5.0	6000	9400	8.6	FA 03	5.0	9400	8.3
0.55	BN 71C	4	1380	3.8	1.55	FD 53	7.5	4300	8700	10	FA 03	7.5	8700	9.7
0.55	BN 80A	4	1390	3.8	1.43	FD 04	10	4100	8000	12.1	FA 04	10	8000	12.0
0.75	BN 80B	4	1400	5.1	1.85	FD 04	15	4100	7800	13.8	FA 04	15	7800	13.7
1.1	BN 80C	4	1400	7.5	2.66	FD 04	15	2600	5300	15.2	FA 04	15	5300	15.1
1.1	BN 90S	4	1400	7.5	2.70	FD 14	15	4800	8000	16.4	FA 14	15	8000	16.3
1.5	BN 90LA	4	1390	10.3	3.6	FD 05	26	3400	6000	19.6	FA 05	26	6000	20.3
1.85	BN 90LB	4	1390	12.7	4.2	FD 05	26	3200	5900	21.1	FA 05	26	5900	21.8
2.2	BN 100LA	4	1410	14.9	5.2	FD 15	40	2600	4700	25	FA 15	40	4700	25
3	BN 100LB	4	1410	20	6.8	FD 15	40	2400	4400	28	FA 15	40	4400	29
4	BN 112M	4	1430	27	8.4	FD 06S	60	—	1400	40	FA 06S	60	2100	42
5.5	BN 132S	4	1440	36	11.5	FD 56	75	—	1050	57	FA 06	75	1200	58
7.5	BN 132MA	4	1440	50	15.6	FD 06	100	—	950	66	FA 07	100	1000	71
9.2	BN 132MB	4	1440	61	18.8	FD 07	150	—	900	75	FA 07	150	900	77
11	BN 160MR	4	1440	73	22.2	FD 07	150	—	850	86	FA 07	150	850	88
15	BN 160L	4	1460	98	29.7	FD 08	200	—	750	129	FA 08	200	750	128
18.5	BN 180M	4	1460	121	37	FD 08	250	—	700	145	FA 08	250	700	144
22	BN 180L	4	1460	144	43	FD 09	300	—	400	175				
30	BN 200L	4	1460	196	59	FD 09	400	—	300	197				

BN_FD
IM B5



	Albero / Shaft / Welle / Arbre					Flangia / Flange / Flansch / Bride						Motore / Motor / Motor / Moteur									
	D DA	E EA	DB	GA GC	F FA	M	N	P	S	T	LA	AC	L	LB	LC	AD	AF	LL	V	R	ES
BN 63	11	23	M4	12.5	4	115	95	140	9.5	3	10	121	272	249	297	119	98	133	14	96	5
BN 71	14	30	M5	16	5	130	110	160				138	310	280	342	132			25	103	
BN 80	19	40	M6	21.5	6	165	130	200	11.5	3.5	11.5	156	346	306	388	143	110	165	41	129	6
BN 90 S	24	50	M8	27	8							176	409	359	461	146			39	160	
BN 90 L						62	199														
BN 100	28	60	M10	31	10	215	180	250	14	4	14	195	458	398	521	155	140	188	73	199	
BN 112												219	484	424	547	170			122	204 (2)	
BN 132	38	80	M12	41	10	265	230	300	18.5	5	16	258	603	523	686	210	140	188	161	226	
BN 160 MR	42	38 (1)	110	M16	M12 (1)	45	41 (1)	12				10 (1)	300	250	350	736	626	820	245	51	266
BN 160 M									780	670	864					187	187				
BN 160 L	80 (1)	51.5	14	10 (1)	110	M16	M16 (1)	51.5	45 (1)	12 (1)	18	348	866	756	981	261	52	305			
BN 180 M	48	38 (1)	51.5	41 (1)								14	10 (1)	878	768	993	64				
BN 180 L	48	42 (1)	M16	M16 (1)	45 (1)	12 (1)	350	300	400	18	18	348	866	756	981	261	52	305			
BN 200 L	55	42 (1)	M20	M16 (1)	59	45 (1)						12 (1)	878	768	993	64					

DIMENSIONS - FLANGE (B14)



Mounting B14					
SIZE	P	N	M	S	T
56	80	50j6	65	M4	2,5
63	90	60j6	75	M5	2,5
71	105	70j6	85	M6	2,5
80	120	80j6	100	M6	3
90	140	95j6	115	M8	3
100/112	160	110j6	130	M8	3,5
132	200	130j6	165	M10	3,5
160	250	180h6	215	M12	4